

# References for systems from 180 – 950 kW





## Compact-heating system 120 kW



## Combustion of chipped straw of bales

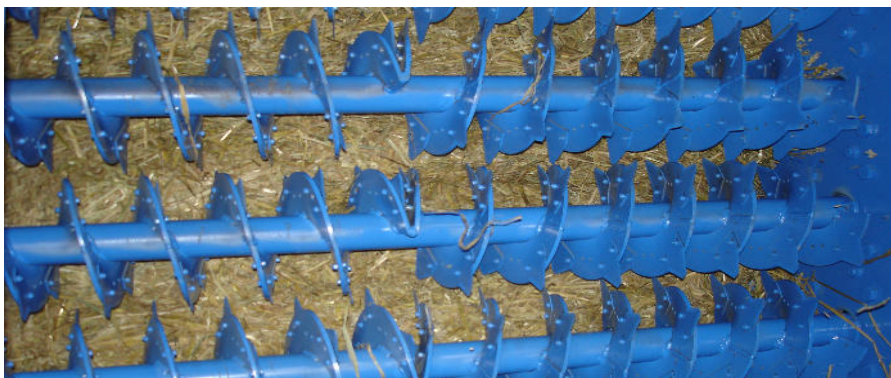


**Boiler:** 88 kW  
**Biomass:** chipped straw  
(Square bales by bale loosener)  
**Heating:**  
- Residential  
- Agriculture buildings





## Combustion of chipped straw of bales



## Combustion of chipped straw of bales



**Boiler:** 120 kW with filter  
**Biomass:** chipped straw  
(round bales by bale chipper)  
**Heating:**  
- Residential  
- Agriculture buildings





## Combustion of chipped straw of bales



# Combustion of straw pellets and husks





**Efficient burnout  
with best emission values**

---



**View into the combustion  
chamber:**

**Flame of a 120 kW system  
burning straw pellets**



## Combustion of waste grain (flour mill)



**Boiler:** 180 kW  
**Location:** Farina-Mill  
Graz/Austria

**Heating:** Office- and  
production buildings





## **Backsberg Estate Cellars - Winery in South Africa**

**Boiler house with fuel silo and buffer department**

---





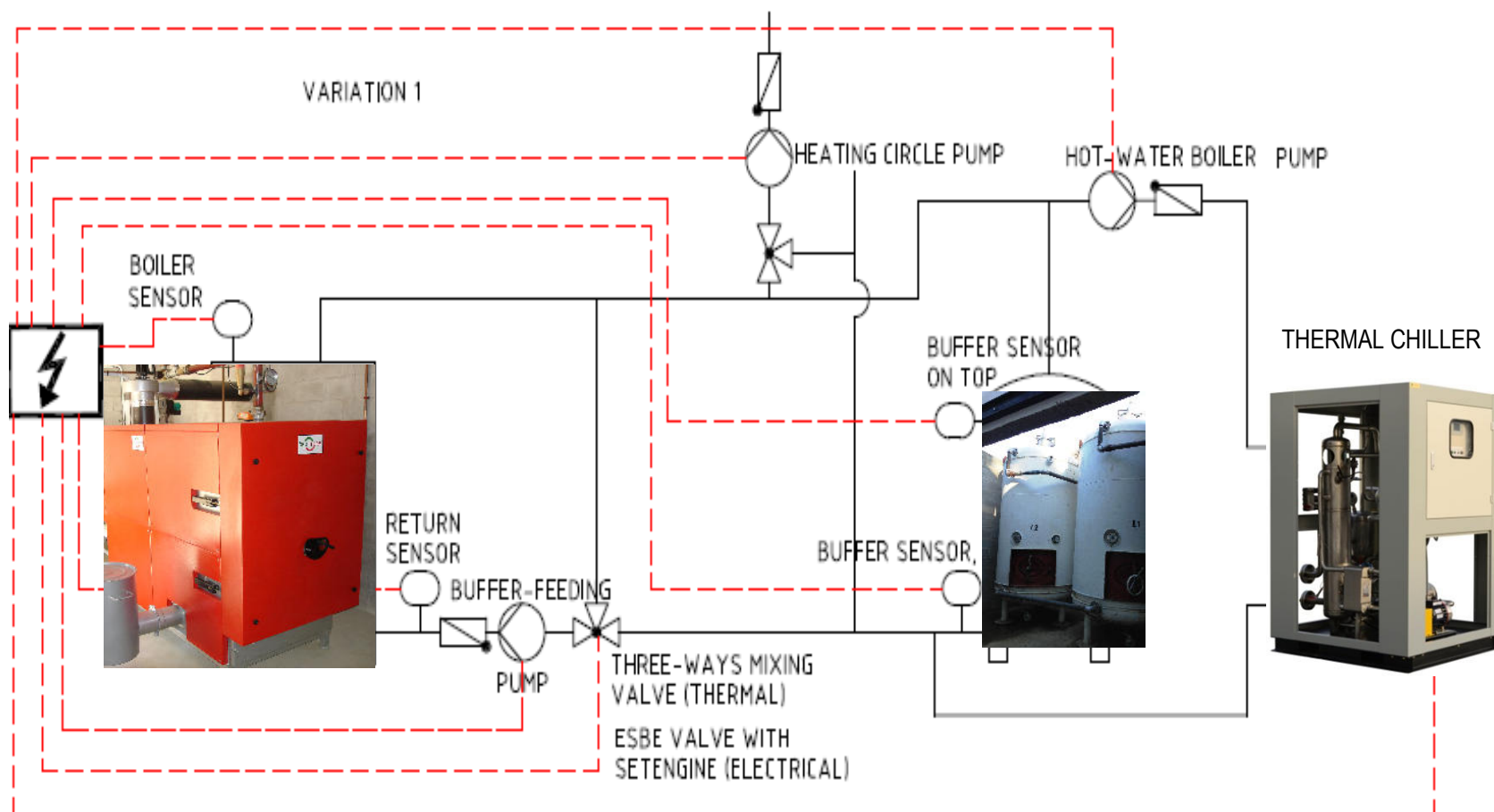


**120 kW boiler with  
fuel auger and control**



## Overview installation scheme

### Backsberg Estate Cellars - Winery South Africa





## Efficient burnout with best emission values

---

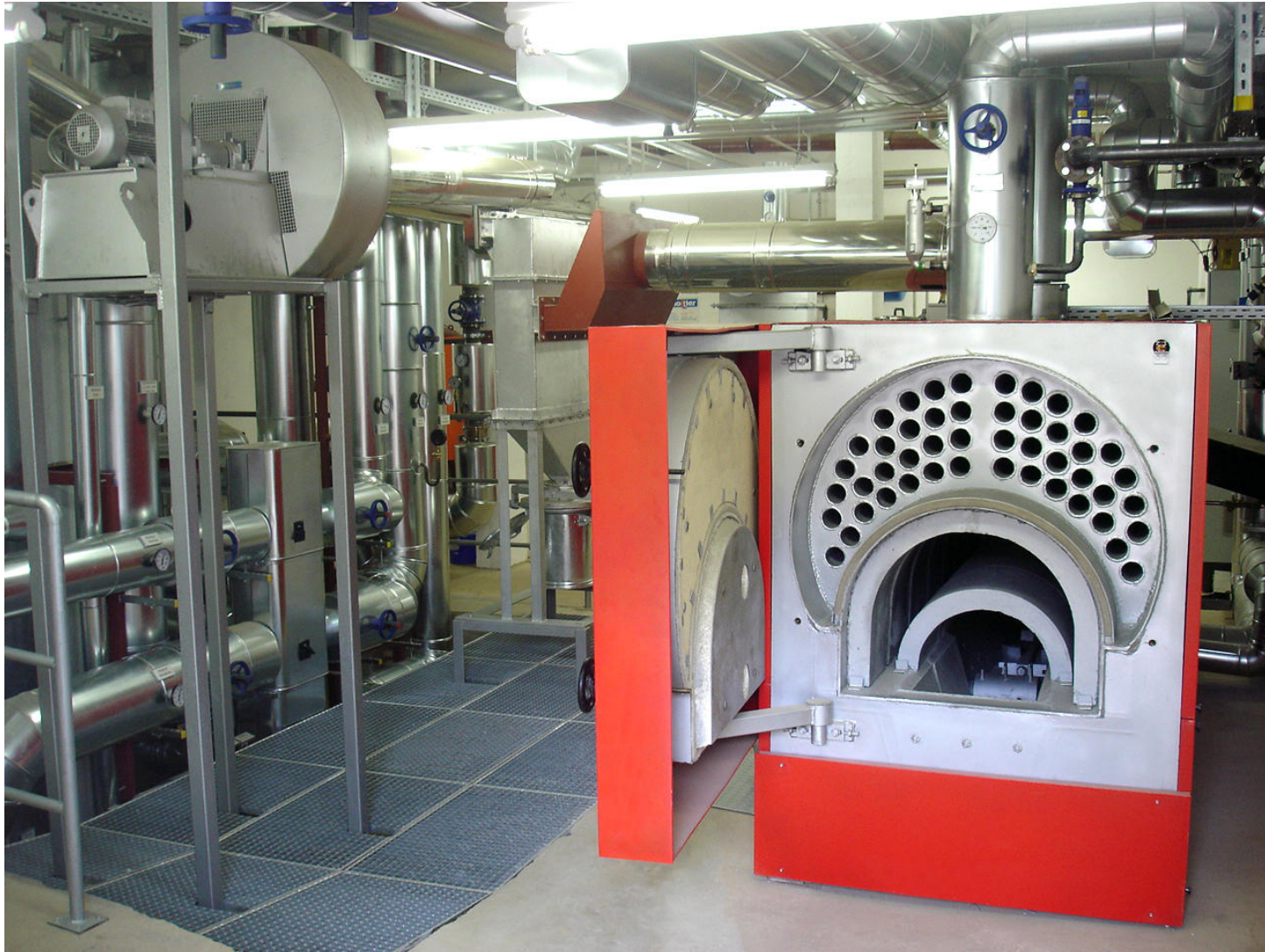


**View into the combustion  
chamber:**

**Flame of a 275 kW system  
burning miscanthus**

## Compact-heating system 275 kW heating an Abbey

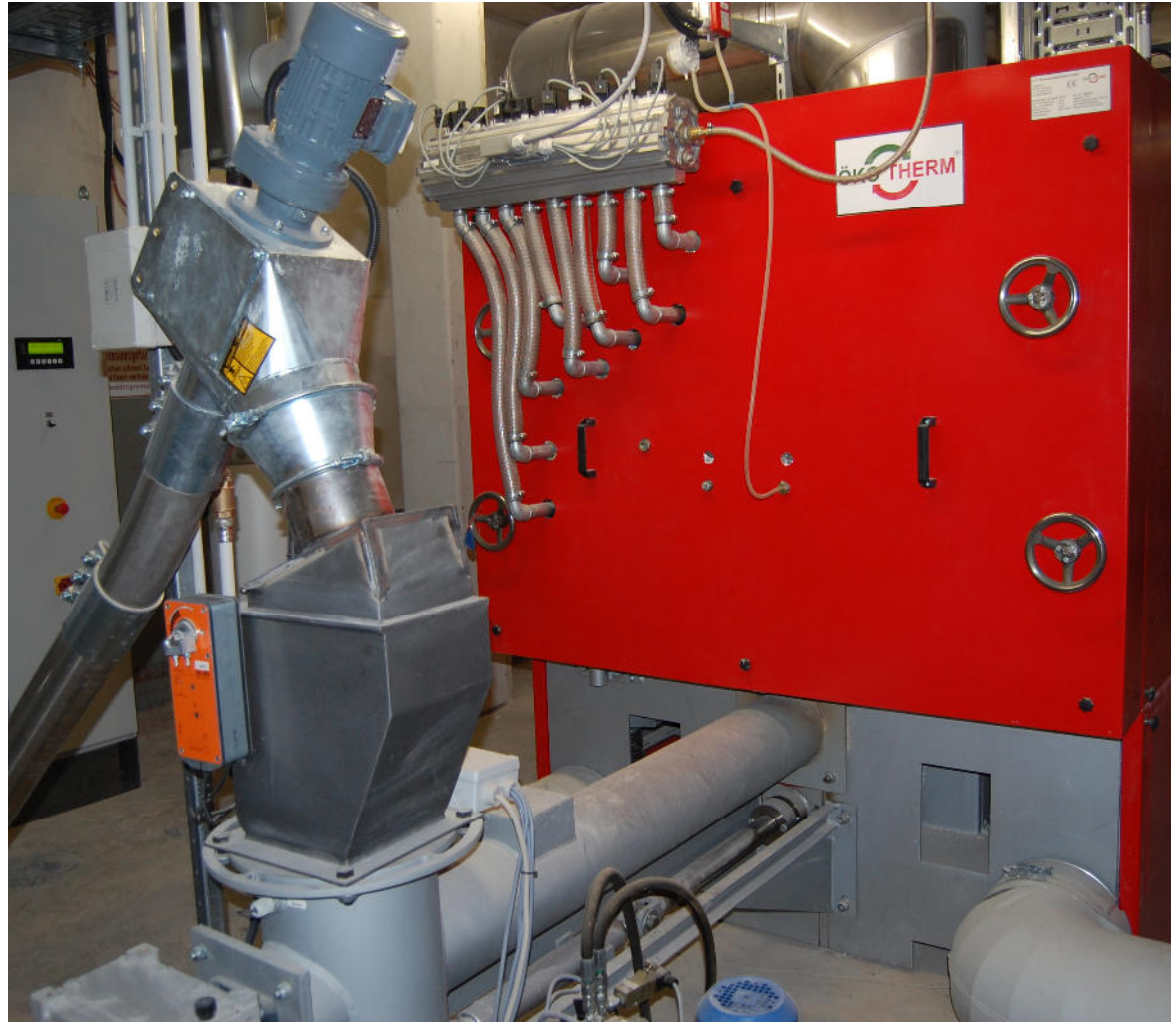
---





# Greenliving in Stuttgart (Contracting 450 kW) Fuel: Wood-pellets in industrial quality

---



**600 kW**

heating 2 schools and a big indoor swimming pool







## District heating with Miscanthus and wood chips

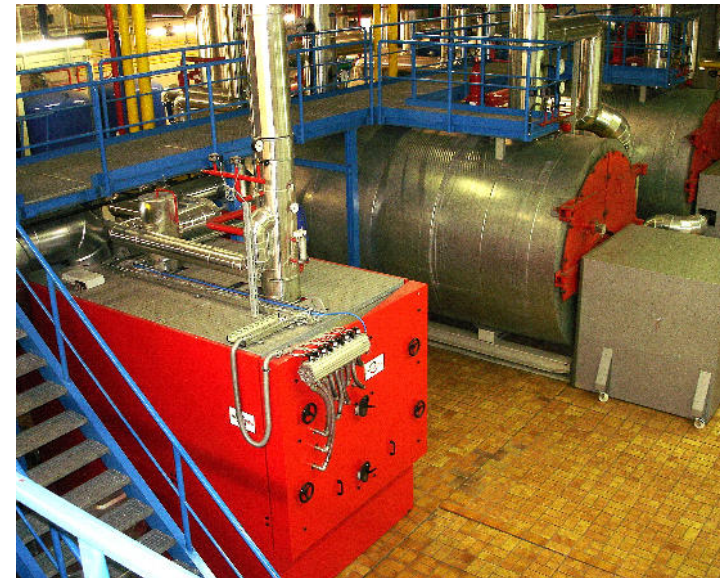


**System:** 600 kW  
**Location:** Göppingen  
Stauferpark  
**Biomass:** Miscanthus  
wood chips  
**Oil-substitution:** 240.000 Liter p.a.  
**Heating object:** District heating  
ca. 130 commercial  
buildings and  
residents  
**Operator:** Energieversorgung  
Filstal GmbH & Co. KG  
73033 Göppingen





**600 kW – Fuel: Miscanthus**  
with automatic cleaning, baghouse-filter





## District heating with Miscanthus and wood chips



**System:** 600 kW

**Location:** University of Bonn  
Campus Klein-Altendorf

**Commissioning:** 2012

**Biomass:** Miscanthus  
wood chips from  
tree cutting

**Oil-substitution:** 95.000 Liter p.a.

**Heating object:** - Campus, office  
- Green house





## District heating with Miscanthus and wood chips



<b>Systems:</b>	<b>700 / 240 kW 800 / 950 kW</b>
<b>Location:</b>	<b>Hoffenheim</b>
<b>Commissioning:</b>	<b>12/2009</b>
<b>Biomass:</b>	<b>Miscanthus wood chips</b>
<b>Oil-substitution:</b>	<b>700.000 Liter p.a.</b>
<b>Heating object:</b>	<b>District heating ca. 250 households, school, commercial buildings</b>
<b>Operator:</b>	<b>Bioenergie Hoffenheim GmbH</b>



**Edward Davies, (UK) 2x 995 kW**

Chicken-farm

Fuel: Miscanthus, woodchips, chicken manure





**Edward Davies, (UK) 2x 995 kW**  
Chicken-farm  
Fuel: Miscanthus, woodchips, chicken manure

---





**Andrew Davies** (UK) 6x 198 kW

Chicken-farm

Fuel: Miscanthus, woodchips, chicken manure





# ÖKOTHERM® - firing module (1.800 kW) with fitted steam boiler

---

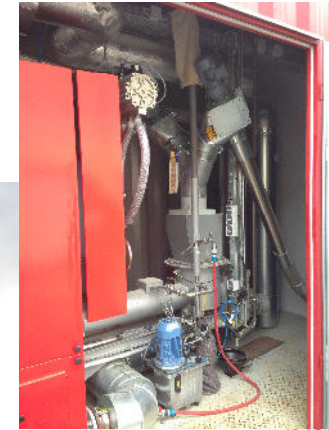


## Container - solutions





## Container - solutions





Biomass boilers

**A.P. Bioenergietechnik GmbH**  
**Träglhof 2**  
**92242 Hirschau**

Uli Dobler

Tel +49 9608-9230128  
Fax +49 9608-913319  
[www.oeko-therm.net](http://www.oeko-therm.net)

mobile +49 172 9672960  
[u.dobler@oeko-therm.net](mailto:u.dobler@oeko-therm.net)